

Dear Parents, Carers and Friends of Belgrave,



Moving into October, pupils are settled into their new classes and there has been exciting learning taking place across school. After giving pupils the chance to settle into their new year groups, parents will have the opportunity to meet with class teachers at Pupil Learning Reviews in November. Appointments will become available before half term and more information will follow. Reception have been focusing on being more independent with the help of their Year 6 buddies at break and lunchtimes.

Year 5 are supporting buddies in Year 1 and enjoyed a reading session in the warmer weather in September, as well as helping with games at break times.

**Save the date for the PTA Christmas Fair:
Friday 6th December 5 – 7pm**

Following the PTA AGM, preparations are already taking place for the PTA Christmas Fair. This is a very popular and well attended event but each year, one of the most difficult tasks is having enough volunteers to set up, man the stalls and tidy up after the fun! If you can help in any way between 4pm and 7.30pm on Friday 6th December then please send Kat Pudney (Chair of PTA and Mum of Lucy in Year 3) a message on 07769334530

Thank you to all of our new Reception parents who have already offered to help or be regular members of the PTA – we are very grateful and it's great to have you on board! The PTA will send out reminders for events beforehand, but all the dates are listed on the diary days below.



GROUNDS DAY



Saturday 19th October 10.00am – 12.00pm

This is a popular family event which helps us to maintain the school grounds and bring some more colour to the areas around school. Please come along with your family on Saturday 19th October between 10am and 12pm, even if you can only spare quarter of an hour – every pair of hands helps!

We would be very grateful for any donations of plants for the pots and shrubs that would be suitable for the woods and pots as well as any bulbs ready to bloom in Spring and bags of compost. Please could these be dropped off on Friday 18th October if you are unable to attend. Alternatively, if you would like to make any monetary donations, please send these into the school office.

Please bring your own tools, gardening gloves and paintbrushes. We do own some gardening tools at school but not enough for everyone!

PTA will be providing much needed refreshments.

There are so many jobs to do. Some examples include:

Pruning, weeding, re-laying bark on the paths and play area in the woods, planting bulbs around school, planting up the pots / new barrel planters, filling the skip; sweeping and tidying.

ASDA CASHPOT

Between 2nd September and 30th November 2024, every time customers shop with Asda using their Rewards app, the supermarket will donate 0.5% of the value of their shop to their chosen primary school. You need to click on cashpot for schools within the app and select Belgrave Primary School, or type in the postcode.



ACHIEVEMENTS OUTSIDE SCHOOL



Lots of achievements outside schools sent in for this month's newsletter. Well done to the following children:

Timmy in Year 4 completed the Cheshire Library Summer Reading Challenge and read 6 books over the 6 week summer holiday. ☆

Summer in Year 2 completed her first mini-miler run race at the Defeat Delamere event in September, helping raise money for charity. Beating the rainy weather and mixed ages of children, she was happy to finish in third female position. Fabulous achievement and very proud she was! ☆



Albie in Year 2 was recently chosen as 'Guitar player of the month' by his guitar teacher. Albie has learnt to play his first song and is enjoying his weekly lessons. Great news Albie! ☆

In September, Ben in Year 4 took part in the 2024 Glan Aber Tennis Tournament and won the Mini Orange final. He was presented with a Trophy on Club Championship Day. Brilliant Ben! ☆



Ludo in Year 3 has recently won the final in a tennis tournament in his category. I know how much he enjoys attending tennis outside school and this shows how well he is progressing! Well done Ludo! ☆



Arliyah in Year 1 achieved the fantastic award of Star of the Week in her gymnastics class that she attends. A lovely picture showing her delight – well done Arliyah – this is super news! ☆



William in Year 6 took part in a duathlon in mid-September. He displayed resilience and was suitably proud of himself! Great achievement William – well done! ☆



Estine in Year 3 along with Lucy and Zara in Year 4 all passed their Shotokan Karate grading at the weekend. Estine is now a red belt. Lucy and Zara are now green belts – congratulations! ☆



PUPIL PREMIUM REGISTRATION

With the cost of living and any changes in circumstances, we are encouraging parents to apply for Free School Meals. All Key Stage One pupils automatically receive a free meal each school day but school can also claim additional funding for any eligible pupil which can help towards equipment and resources (including school trips) for your child.

To see if you qualify, follow this link with a quick eligibility check:

<https://www.cheshirewestandchester.gov.uk/residents/education-and-learning/free-school-meals>

Please let the school office know if you qualify for Free School Meals. If you require any help with this process then please contact the school office who will be happy to help.

CROSS COUNTRY



The School Cross Country Race Series is back up and running for the new academic year. We have been fortunate that many children and parents have organised attending the cross country events at Ellesmere Sports Village, Stanney Lane over the past couple of years and we have performed extremely well in the overall results table.

If your child is in Year 3 -6 and they would like to attend, the dates are as follows:

- Saturday 5th October
- Saturday 9th November
- Saturday 7th December
- Saturday 18th January

Races start at 10.00am and registration is from 9.30am for Years 3 and 4 and 10.00am for Years 5 and 6 children.

FIRST AID

Our First Aid system will alert parents by email (not a phone call) if there is a head or facial injury. Not all first aid concerns will be shared with parents, only significant ones. It would not be possible to manage sharing all first aid reports as there are many bumps and scrapes each day.

Parents will be contacted by phone if an injury is serious enough for hospital treatment. It is important that you keep us updated with any changes to emergency contacts (minimum of two adults) and up to date phone numbers so that the office can contact you.



WEAR IT ONEDERFUL FOR WORLD DIABETES DAY



World Diabetes Day is on Thursday 14th November. We are always keen to get involved in the JDRF (Juvenile Diabetes Research Foundation) charity and Freddie in Year 6 will be helping me lead an assembly that week to explain what diabetes is all about.

This year we're asking children to celebrate by wearing their most joyful, whimsical and wonderful outfits to school to help raise awareness of Type 1 Diabetes. If you would like to donate to raise vital funds for breakthroughs in type 1 diabetes then please follow the link and [Donate here](#)

PTA PLEA FOR MATCH FUNDING

Our PTA are doing a fantatsic job of raising funds for our school. You may be aware of the match funding scheme and how a little bit of your time could raise double the funds for the PTA.

If you work for an organisation that has a match funding policy, any money you raise could be matched by your employer. Companies may match the fundraising total for an event, or for the stall that their employee is working on (such as Christmas Fair). Usually, the employee will need to supply them with a letter from the PTA detailing the date and nature of the event, together with the total raised.



We understand that the high street banks, building societies, supermarkets and large corporations are likely to do match funding, but these schemes are not exclusive to the major corporate giants. If you work for an independent company, they may be interested in charitable giving through match funding too.

We would be grateful if you could see if your employer has a match funding scheme, or if they are willing to match fund any of our events. If you can't help out this time, but you know the company you work for has a match funding policy, please let us know. This could be a really large source of income for the PTA and help us raise money for our much needed library that PTA are saving for!

If you think you may be able to help in any way then please contact Kat Pudney on 07769334530.

ATTENDANCE AND ILLNESS

The importance of School Attendance is essential for pupils' learning and attainment. A child who is absent a day of school per week misses an equivalent of two years of their school life. If a child's attendance falls below 95%, you will be sent a letter at the end of a term informing you of this and ways that we can support you to ensure your child's attendance improves. As a school, we report to the Education Welfare Officer for Cheshire West who monitors attendance which falls below the expected rate. **No holidays during term time will be authorised.**

We follow Public Health England / NHS guidance for back to school advice after illness. If your child has had sickness or diarrhoea they can only return to school 48 hours after the last episode.

For more information when to keep your child off school please follow the link below:
[When can my child return to school?](#)

Illness	Return to School Guidance
Chicken Pox	When all spots have crusted over
Conjunctivitis	None*
Diarrhoea & Vomiting	48 hours from last episode
Glandular Fever	None*
Hand, foot & mouth	None*
Impetigo	When lesions are crusted & healed or 48 Hours after commencing antibiotics
Measles or German Measles	4 days from onset of rash
Mumps	5 days from onset of swelling
Scabies	After first treatment
Scarlet Fever	24 hours after commencing antibiotics
Slapped Cheek	None*
Whooping Cough	48 Hours after commencing antibiotics
Flu	Until recovered
Head Lice	None*
Threadworms	None*
Tonsillitis	None*

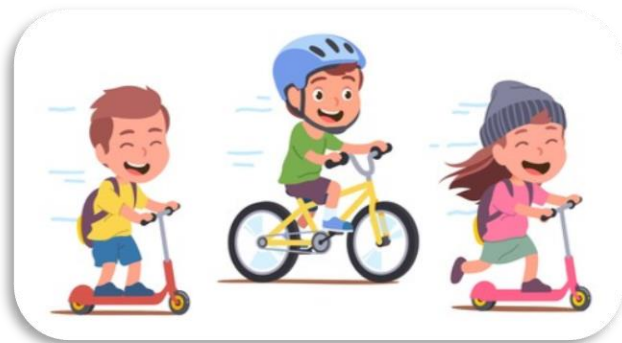
*No need to stay off but school or nursery should be informed.

This information is based on the Public Health Agency guide - full copy here

PLAYGROUND REMINDERS AT DROP OFF AND PICK UP

We expect all children (including younger siblings) to walk their bikes and scooters when entering the school grounds. This is to ensure that there are no accidents caused by cycling or scooting across the playground.

Dogs are not permitted on school grounds; this includes all playgrounds. Please ensure that if you are leaving your dog at the school gate, they are not obstructing families passing in and out of school. Gates will be locked 10 minutes after the end of the school day.



Please ensure that your children are not playing in the Forest School area after the end of the school day. Our gates will close on an automated timer.

SCHOOL COUNCIL KINDNESS CHALLENGE

We are delighted to be supporting Childline by taking part in the Kindness Challenge this first week in October. School Council are keen to raise money for others whilst making a difference to kindness in our school and at home. We'll be spending a week creating more kindness in our school community by working through a list of kindness acts. We ask that you give a donation towards NSPCC to raise money whilst spreading kindness.

Children have completed a Kindness Acts sheet where they have selected six ways to spread more kindness over the week. Please can you support your child by asking them to tell you about when they have tried hard with their Kindness Acts, we will be reflecting on them each day in school. Many thanks



MESSAGE FROM THE GOVERNING BOARD

Hi everyone, a relatively quiet month for us as we gear up for our first meeting of the school year which we'll use to review the school's Annual Development Plan (ADP). We look forward to meeting new parents at the upcoming PTA Christmas Fair in December.

Thank you,
Belgrave Governing Board

AND FINALLY.....

- School attendance is mandatory for all pupils of compulsory school age. Please report all pupil absences to the school office by email or phone. The school office will follow up any absences not reported by 9.15am.
- Please continue to let us know of any achievements made outside school so that we can share them in our newsletters. Please send them by email to admin@belgrave.cheshire.sch.uk
- Term dates are on the school website and a copy is below. **Please note the Inset day where staff will be training is this Friday 4th October where school is closed for all pupils.**

As ever, we really appreciate your support, enthusiasm and partnership.

Juliette Benton
Headteacher



DIARY DATES

Confirmed dates are listed below. Please note that some dates may be subject to change.

October	
Tues 1 st	Year 6 Residential meeting for Parents 3.30pm Year 6 classroom
Wed 2 nd	Monster Phonics Day – KS1 Dress up as favourite character / KS2 Wear favourite Monster Phonics colour
Thurs 3 rd	Year 6 trip to Stockport Air Raid Shelters
Fri 4 th	Inset Day (pupils not in school)
W/b 7 th	Year 5 trip to River Dee
Mon 7 th – Fri 11 th	Year 6 Bikeability
W/b 14 th	Year 1 walkaround trip around local area
Sat 19 th	Grounds Day
Tues 22 nd	Reception and Year 1 Phonics and Reading Parent workshop
Wed 23 rd	Year 2 trip to Lady Lever Art Gallery
Thurs 24 th	PTA Disco KS1 4-5pm KS2 5.15pm – 6.15pm
Fri 25 th	PTA Break The Rules day (more PTA information to follow for new families)
Fri 25 th	Last day of half term
November	
Mon 4 th	Return to school
Date TBC	Year 4 Roman Trip in Chester TBC
Fri 8 th – Wed 13 th	Scholastic Book Fair
Mon 11 th	Pupil Flu vaccinations
Tues 12 th	Pupil Learning Reviews 1.00pm – 5.00pm
Wed 13 th	Pupil Learning Reviews 3.30pm – 6.30pm
Thurs 14 th	Wear it Onederful – World Diabetes Day
Fri 15 th	Year 3 visit to Lache Library
Fri 15 th	Children in Need day
Fri 22 nd	Individual and sibling photographs
Thurs 28 th	Year 4 Lantern Parade 7pm Chester City Centre
December	
Thurs 5 th	Wider Opps music performance for Year 4 parents 2.45pm
Fri 6 th	PTA Christmas Fair 5.00pm
Tues 10 th	Rec / KS1 Christmas performance 1.30pm
Wed 11 th	Rec / KS1 Christmas performance 9.45am
Thurs 12 th	Y1 – 6 trip to Peter Pan Pantomime at Floral Pavillion, New Brighton
Thurs 12 th	Reception Christmas party at school
Mon 16 th	KS2 Christmas performance 5.00pm
Tues 17 th	KS2 Christmas performance 9.30am
Wed 18 th	Christmas dinner
Thurs 19 th	Last Day of Term – School Closes at 2pm (No Happy Hive after school club)
Fri 20 th	Inset Day (pupils not in school)
January 2025	
Mon 6 th	Inset Day (pupils not in school)
Tues 7 th	Pupils return to school
Spring Term	Year 5 swimming begins - dates TBC
W/b 20 th	Year 2 visit to Lache Library
Thurs 23 rd	Year 6 trip to Safety Central
Wed 29 th	Year 3 trip to Liverpool World Museum
February	
Wed 5 th	Reception and KS1 Bedtime Story session 4.15pm – 5.15pm

Wed 12 th	PTA Movie night
Fri 14 th	Break The Rules day
Fri 14 th	Last Day of Half Term
Mon 24 th	Pupils return to school
March	
Tues 11 th	Year 5 trip to Xplore Learning
W/b 17 th	Eco Team local visit
Tues 25 th	Pupil Learning Reviews 3.30pm – 6.30pm
Wed 26 th	Pupil Learning Reviews 1.00pm – 5.00pm
Thurs 27 th	Musical celebration for parents 2.15pm
April	
Thurs 3 rd	PTA Springo Bingo
Fri 4 th	Last Day of Term – School Closes at 2pm (No Happy Hive after school club)
Wed 23 rd	Pupils return to school
Summer term	Year 2 trip to Jodrell Bank - date TBC when bookings become available
Mon 28 th	Year 4 trip to Tattenhall
Wed 30 th	Year 3 trip to Ness Gardens
May	
Mon 5 th	Bank Holiday – no school
Mon 12 th – 15 th	Year 6 KS2 SATs
Wed 21 st	Year 5 residential visit to Conway Centre (2 nights)
Fri 23 rd	Year 5 return from residential
Fri 23 rd	Last Day of Half Term
June	
Mon 2 nd	Inset Day (pupils not in school)
Tue 3 rd	Pupils return to school
Thurs 5 th	Class photographs
Mon 9 th	KS2 Sports Day 1.30pm
Tues 10 th	Reception trip to Imagine That!
Mon 16 th	Rec / KS1 Sports Day 1.30pm
Tues 17 th	Reserve KS2 Sports Day
Thurs 19 th	Reserve Rec / KS1 Sports Day
Thurs 19 th	PTA Summer Social 5-7pm
Fri 20 th	Year 1 trip to Prestatyn beach
Fri 27 th	PTA Break The Rules day
July	
Wed 9 th	Year 6 residential to London (2 nights)
Thurs 10 th	Wider Opps music performance for Year 4 parents 2.30pm
Fri 11 th	Year 6 return from residential
Mon 14 th	End of year reports sent out
Tues 22 nd	Last Day of Term – School Closes at 2pm (No Happy Hive after school club)