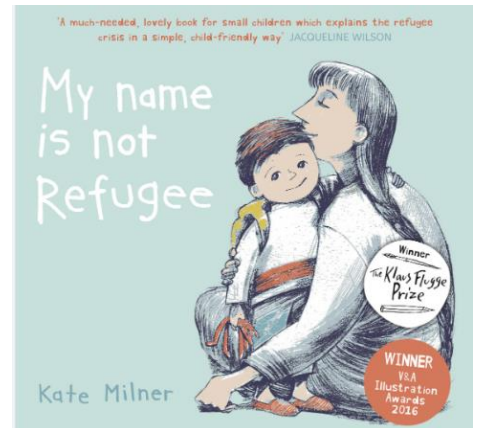


Dear Parents, Carers and Friends of Belgrave,

I do hope that you all enjoyed some rest over the festive period. Wishing you all a happy new year from all of us at Belgrave!

It was lovely to welcome pupils back to school and see them enthused about their learning. All classes are focusing on a whole school book this week, 'My Name Is Not Refugee' by Kate Milner. The book is a powerful and moving exploration into each stage of a young boy's journey which he is about to make with his mother. They will leave their town, his mother explains, and it will be sad but also a little bit exciting. They will have to say goodbye to friends and loved ones, and that will be difficult. They will have to walk and walk and walk, and although they will see many new and interesting things, it will be difficult at times too. The story encourages discussion around many aspects along with beautiful illustrations which allow children to imagine and empathise.



ECO IN THE COMMUNITY



We were impressed to hear that Eco friendly pupils Leon, Wala and Bruno went litter picking around the Westminster Park neighbourhood on New Years Eve. This is a great community act – well done!

There are some great recycled Christmas tree competition entries coming into school this week. Well done reusing your Christmas packaging and unwanted decorations. Any more entries need to be in school by Wednesday 11th January.

ACHIEVEMENTS OUTSIDE SCHOOL

Matthew, Mair and Abigail (all in Year 3) recently gained their green badges in Kubz, showing their skills are improving.

Thomas (Year 6), Julia and Matthew (both in year 5) were graded by a Kubz Master from Manchester. They did brilliantly, showing off their patterns and sparring skills and gaining their next belts.



If anyone would like to try out Kubz then please speak to Matthew and Abigail's mum who is one of the instructors or contact www.tkd-chester.co.uk

The group meets at The Kings School on a Monday evening.



Heather in Year 4 has recently been awarded grade 1 with a distinction in piano. This is a fantastic achievement – well done Heather!



MESSAGE FROM THE GOVERNING BOARD

We hope our little Belgrave community, children, parents, staff and fellow governors, have had a wonderful Christmas break.

We start the new year with a mini-reshuffle of the governing board:

To help them deal with increased work responsibilities, Churni Jennings has stepped down from the role of Chair, and Amrith Shetty has stood down from the governing board.

The entire governing board thanks them both, in particular Churni, for all the hard work she has put in as Chair over the last 2 years.

Franck Schmidlin is now Chair, and the board has also co-opted Deborah Forrest to join us.

In other news, governors, together with the entire staff, have started the year with our mandatory Safeguarding training, provided by our excellent Deputy Head / SENCo, Ms Taylor, to ensure we all understand and know how to keep children safe, as well as our roles and responsibilities in law.

Our next governor meeting is in the first week of February.

As always, please contact the board via the school reception if you have any queries or are interested in joining us.

Thank you,

Belgrave Governing Board

ATTENDANCE, SICKNESS AND HOLIDAYS

Children are expected to attend school for the full 190 days of the academic year, unless there is a good reason for absence. There are two types of absence:

- Authorised absence - where the school approves pupil absence
- Unauthorised absence - where the school does not approve absence

At Belgrave, we aim to achieve an attendance rate of over 95% (meaning children are absent from school no more than 1 day every 4 weeks). To support this, we will provide the following in an effort to maintain and improve attendance:

- A caring and supportive atmosphere where children come first
- Careful registration, making sure mistakes are not made
- If a message has not been received, we will make a phone call home on the first morning that a child is absent from school
- Information for parents about attendance
- Monitoring and support for children whose attendance is below 90%

Any child with attendance below 90% is categorised as a persistent absentee, and are missing more than 1 day of school every 2 weeks on average. If you are unsure about whether your child should attend school, please contact the school office by telephoning 01244 421332 or by email - admin@belgrave.cheshire.sch.uk

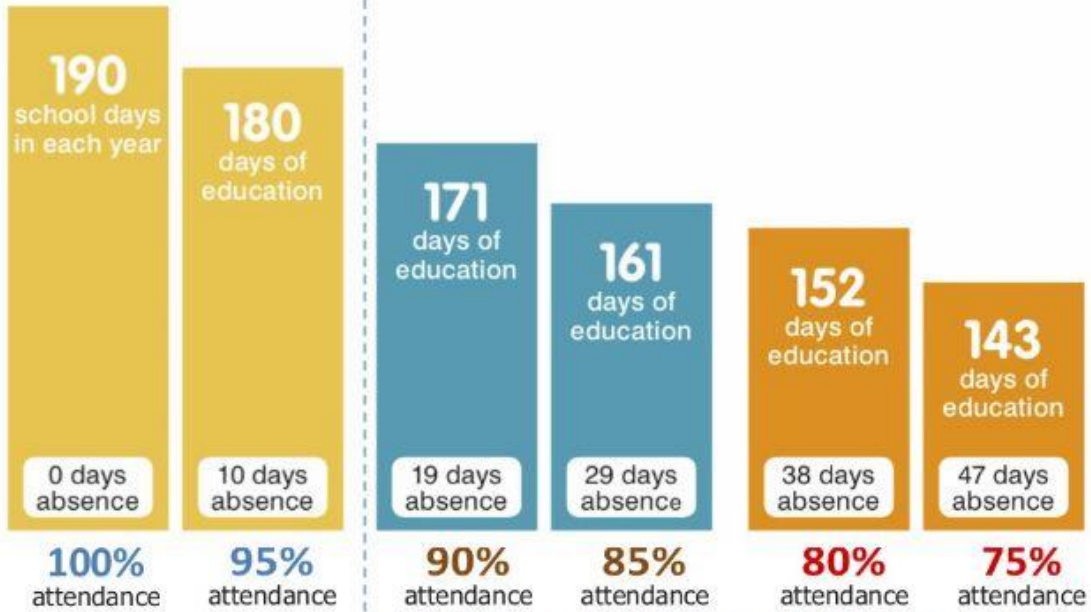
When a pupil is withdrawn during term time there is disruption to the learning process and this can sometimes result in the pupil falling behind his/her peers. Permission for family holidays in term time can only be granted in exceptional circumstances. The Department for Education issued new guidelines in September 2013 which clarified the expectations for headteachers and parents.

The following are not legitimate reasons for taking holiday in term time and will be unauthorised:

- Availability of cheap holidays
- Availability of desired accommodation
- Poor weather experienced in the school holiday period
- Overlap with the beginning or end of term
- Holidays booked before checking with the school
- Siblings at other schools with different holidays
- Day trips
- Visiting family / friends in other towns or countries

Good attendance means...

Being in school at least 95% of the time
or 180 to 190 days ...



"Well Done"

NOW CLASSED AS PERSISTENT ABSENTEE

"I'm very worried"

"I'm seriously concerned"

Best chance of success

Poor attendance—less chance of success

Very poor attendance—serious impact on education and reduces life chances

There are 365 days in a calendar year

175 days are not spent at school
So there's plenty of time for shopping, holidays and appointments

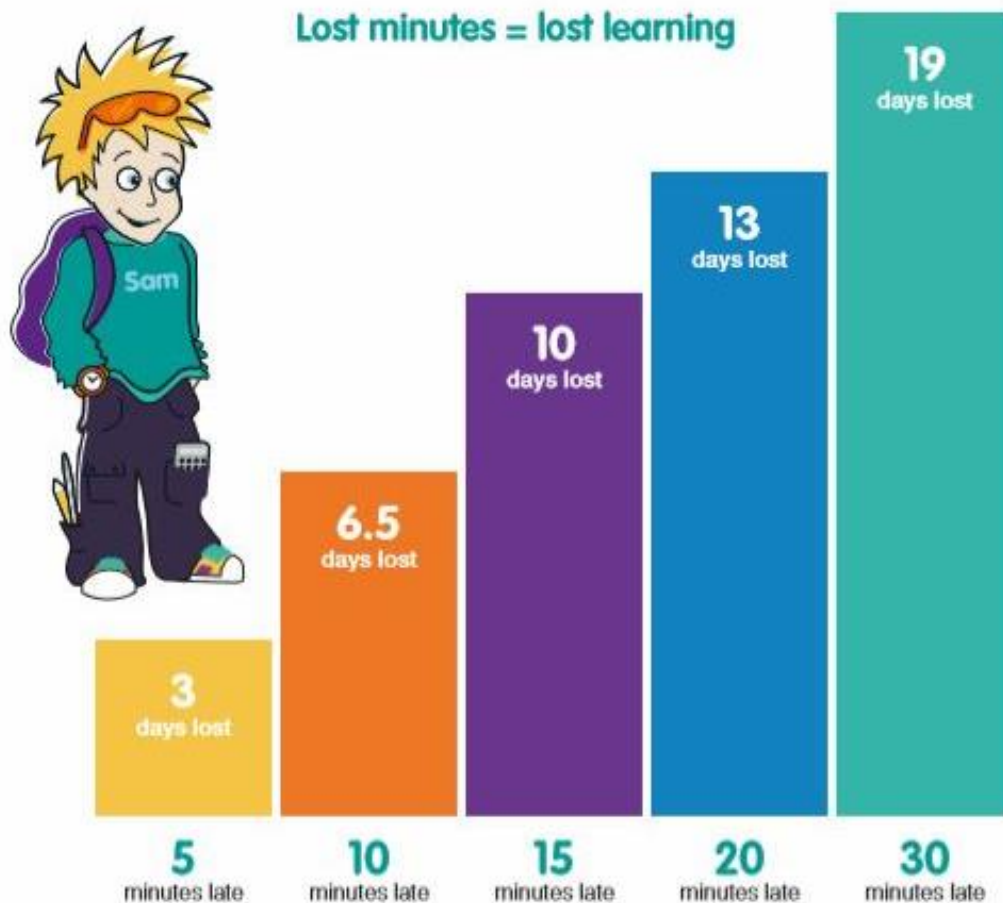
Did you know? A two week holiday in term time means that the highest attendance a child can achieve is 94.7%



LATENESS - When your child arrives late at school, they miss important events like morning activities, teacher instructions, introductions and register / dinner registration. Many children also feel anxious and embarrassed at having to enter school late.

Frequent lateness can add up to a considerable amount of learning being lost. This can seriously disadvantage your child and disrupt the learning of others. **Please help your child to be punctual.**

If a child is late 10 minutes each day it equates to 7 lost teaching days across the year.



Every school day counts
but every minute is equally important!

Did you know?

Being 15 minutes late each day is the same as missing two weeks of school!*

*Over one full academic year

**AND
FINALLY.....**

- Please continue to let us know of any achievements made outside school so that we can share them in our newsletters. Please send them by email to admin@belgrave.cheshire.sch.uk



Juliette Benton

Headteacher

DIARY DATES

DIARY DATES	
January '23	
Tue 3 rd	Inset Day
Wed 4 th	Pupils return to school
Mon 9 th	Clubs timetable starts
Thurs 19 th	Enjoy USA Lunch Menu
Mon 23 rd	Chinese New Year Lunch Menu
Tue 24 th	Year 6 trip to Safety Central, Lymm
February	
Fri 17 th	Last Day of Half Term
Mon 27 th	Inset Day
Tue 28 th	Pupils return to school
March	
Fri 31 st	Last Day of Term – School Closes at 2pm (No Happy Hive after school club)
April	
Mon 17 th	Pupils return to school
Wed 26 th	Year 4 residential visit to Tattenhall (1 night)
Thurs 27 th	Year 4 return from residential
May	
Mon 1 st	Bank Holiday – no school
Tue 2 nd	Return to School
Mon 8 th	Additional Bank Holiday His Majesty's Coronation – no school
Mon 22 nd	Year 3 residential visit to Delamere (1 night)
Mon 22 nd	Year 5 residential visit to Conway Centre (2 nights)
Tues 23 rd	Year 3 return from residential
Wed 24 th	Year 5 return from residential
Fri 26 th	Last Day of Half Term
June	
Mon 5 th	Inset Day
Tue 6 th	Pupils return to school
Thurs 8 th	Tempest Class Photographs
Mon 12 th	Year 6 residential to London (2 nights)
Wed 14 th	Year 6 return from residential
W/b 19 th	Interfaith Week
July	
Fri 21 st	Last Day of Term – School Closes at 2pm (No Happy Hive after school club)